

**WE KEEP
AUSTRALIA
ON THE MOVE**

LONGMARCH

QUALITY YOU CAN TRUST

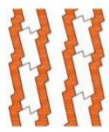


LM 218

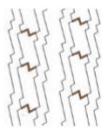
Premium All Position Highway Service

- The LM218 is a classic design delivering excellent reliability.
- The combination of the latest cut-chip technology and compound promotes maximum tyre longevity.

TECHNICAL CHARACTERISTICS:



The four vertical line pattern main channel so that the tire has a high performance and good stability.



Variable pitch, broken line groove pattern design provides a tire with excellent anti slippery performance and low noise.

The pattern on the small groove favorable tire heat while providing strong clutching the wet skid resistance, good.

ADAPTABLE POSITION:

 recommendation



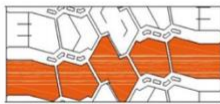
Size	Ply	Load index/Speed	Depth (mm)
11R22.5	16	148/145M 146/143M	15

LM 302

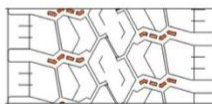
*Drive Position, Short/Long Distance
On & Off Road Highway Service*

- The combination of the LM302 compound and design delivers exceptional traction across a variety of applications
- The addition of the shoulder rib blocks promotes even wear for maximum tyre life

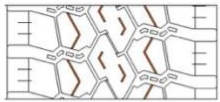
TECHNICAL CHARACTERISTICS:



Horizontal and deep trench excavation pattern provide tyre excellent drive and brake performance.



Lateral pattern design and pattern groove wide compound bump effectively improve the self-cleaning of the tire.



The pattern on the block small groove design, improve the tire wear resistance and stability.

ADAPTABLE POSITION:

 recommendation



Size	Ply	Load index/Speed	Depth (mm)
11R22.5	16	146/143M 148/145M	20
295/80R22.5	18	152/149M	20.5
315/80R22.5	20	156/150K	20.5

LM 211

Cut Chip Compound

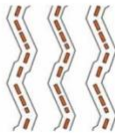
All Position On/Off Road Service

- The combination of the Longmarch product formula and history of the all position tread design delivers another exceptional off road tyre. Now available both in the 11 R22.5 and 255/70 R22.5.

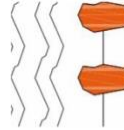
TECHNICAL CHARACTERISTICS:



The unique three line roove, provide good aneuverability and grip.



Self-cleaning tread Goudi raised effectively improve the tire rubber.



Deep shoulder groove provides good driving heat dissipation



ADAPTABLE POSITION:

 recommendation



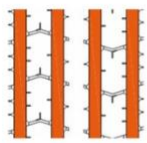
Size	Ply	Load index/Speed	Depth (mm)
11R22.5	16	146/143M 148/145M	15.5
255/70R22.5	16	140/137L	14

LM 216

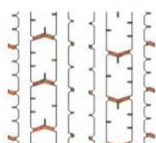
Premium Steer/Trailer Position On Highway Service

- This is Longmarch's Great Grandfather of 'Steer & Trailer' tyres. The straight rib design has uphold its reputation proven across various Australian conditions.
- The choice of tread depth (mm) delivers low rolling resistance and provides excellent fuel efficiency

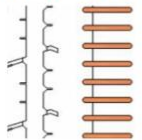
TECHNICAL CHARACTERISTICS:



Four longitudinal grooves, provide excellent energy and low noise performance



Transverse small groove pattern provide good wet skid resistance, the groove edge knife groove to prevent irregular wear.



Shoulders fine siping can heat dissipation, and can reduce tire irregular shoulder wear.

ADAPTABLE POSITION:

 recommendation



Size	Ply	Load index/Speed	Depth (mm)
215/75R17.5	16	135/133M	13
235/75R17.5	16	132/129J	13
235/75R17.5	18	143/141J	13
8R19.5	12	124/122M	13
225/70R19.5	14	128/126M	13
225/70R19.5	18	143/141L	13

LM 216

*Premium Steer/Trailer Position
On Highway Service*

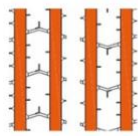
Size	Ply	Load index/Speed	Depth (mm)
...continue			
245/70R19.5	-	136/134M	13
265/70R19.5	16	143/141M	13
305/70R19.5	18	148/145L	14
11R22.5	16	146/143M 148/145M	15
255/70R22.5	16	140/137L	14
275/70R22.5	16	148/145M	15
275/80R22.5	16	149/146M	15.5
295/80R22.5	18	152/149M	16
315/80R22.5	18	154/151M	16.5
315/80R22.5	20	156/150M	16.5

LM 217

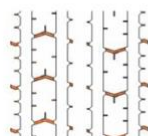
Premium Steer/Trailer Position On Highway Service

- This is our Australian Most Wanted Steer. The straight rib design follows from the traditional 216 pattern with improved, longer lasting compound and the addition of the stone deflectors for better off road capabilities.
- The product is only available now with the latest cut chip technology in both the 11 R22.5 and 295/80 R22.5.

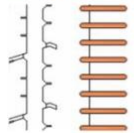
TECHNICAL CHARACTERISTICS:



Four longitudinal grooves, provide excellent energy and low noise performance



Transverse small groove pattern provide good wet skid resistance, the groove edge knife groove to prevent irregular wear.



Shoulders fine siping can heat dissipation, and can reduce tire irregular shoulder wear.



ADAPTABLE POSITION:

 recommendation



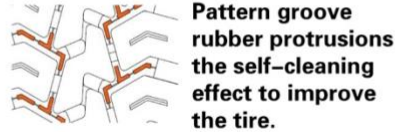
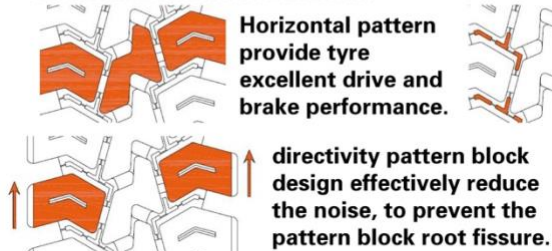
Size	Ply	Load index/Speed	Depth (mm)
11R22.5	16	146/143M 148/145M	16
295/80R22.5	18	152/149L	16

LM 328

Drive Position, Short/Long Distance On/Off Road Service

- The LM328 is easily our customer's upcoming choice for a local on and off road tyre
- The product is available with the latest cut chip tyre technology providing exceptional performance on & off road logging and gravel routes
- In a 11 R22.5, the product is now available in the 24mm tread depth

TECHNICAL CHARACTERISTICS:



ADAPTABLE POSITION:

 recommendation



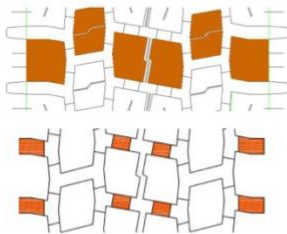
Size	Ply	Load index/Speed	Depth (mm)
11R22.5	16	148/145M	24
295/80R22.5	18	154/149K 152/149M	20
315/80R22.5	20	156/150K 156/150M	20.5

LM 329

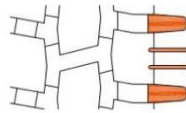
Drive Position Longhaul On Road Service

- The LM329 is a classic rib block tread design
- The combination of the design and Longmarch compound formula delivers another exceptional long haul tyre across a variety of applications
- The LM329 design follows from the original LM326 - with the new improved water technology, sipes for better wet skid performance.

TECHNICAL CHARACTERISTICS:



Horizontal pattern provide tyre excellent drive and brake performance.



Open shoulder and tiny groove design, good tire heat dissipation.

Strengthen among pattern block design increase the boots strengthen and avoid tear



Size	Ply	Load index/Speed	Depth (mm)
275/70R22.5	16	148/145M	20.5
295/80R22.5	18	152/149M	20
305/70R19.5	18	148/145K	19
315/70R22.5	18	154/150M	22
315/80R22.5	20	156/150M	22

LM 508

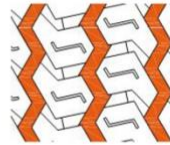
Drive Position Closed Shoulder On & Off Road Service

- The LM508 is a unique design, tested across the most diverse terrains
- The combination of the design and cut chip tyre technology delivers excellent off road performance

TECHNICAL CHARACTERISTICS:



Horizontal pattern provide tyre excellent drive and brake performance.



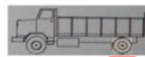
Three zigzag pattern groove design for tyre good wet resistance.

Open shoulder decorative pattern design, good heat dissipation.



ADAPTABLE POSITION:

 recommendation



Size	Ply	Load index/Speed	Depth (mm)
215/75R17.5	16	135/133J	15
235/75R17.5	16	132/129J	15
235/75R17.5	18	143/141J	15
225/70R19.5	12	125/123J	15
225/70R19.5	14	128/126J	15
245/70R19.5	16	135/133J 136/134M	15
265/70R19.5	16	143/141J	15

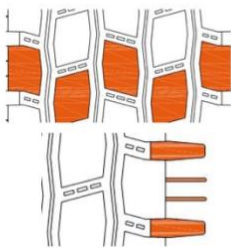
LM 511

Drive Position

On & Off Road Highway Service

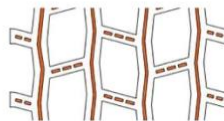
- The LM511 is a directional and open shoulder design
- The combination of the design delivers an excellent short, medium and long distance
- Most important the product formula for the LM511, is one of the longest lasting for maximum tyre longevity

TECHNICAL CHARACTERISTICS:



Horizontal pattern provide tyre excellent drive and brake performance.

Shoulder pattern groove and open pattern design, good tire heat dissipation.



Rubber bump a pattern groove self-cleaning effect to improve the tire, Prevent pattern root fissure.

ADAPTABLE POSITION:

 recommendation



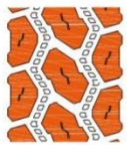
Size	Ply	Load index/Speed	Depth (mm)
295/80R22.5	18	152/149K	22
315/80R22.5	20	156/150K	22

LM 516

*Drive Position Closed Shoulder Deep Tread
For Highway Service*

- The LM516 is a unique, closed shoulder design
- The combination of the design and available in a 11 R22.5 in 24mm tread depth promotes exceptional long haul performance both on & off road
- The special product formula in this product speaks for itself – call our experts and find out why

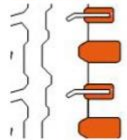
TECHNICAL CHARACTERISTICS:



Deepen block pattern give tires superior drive and brake effectively, improve mileage



Pattern groove rubber protrusions effectively improve the self-cleaning of the tire.



Shoulder pattern groove favorable tire heat dissipation.



Tiny groove pattern block to improve the wet resistance of the tire.

ADAPTABLE POSITION:

 recommendation



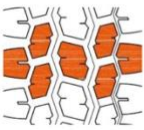
Size	Ply	Load index/Speed	Depth (mm)
11R22.5	16	146/143L 148/145L	24

LM 518

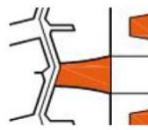
*Drive Position Opened Shoulder
Urban/Rural On Road Service*

- The LM518 open shoulder design promotes versatile functionalities
- The product is available with all the latest cut chip tyre technology tread and this was one of Longmarch's drive earliest successors
- Today, the product remains the customer's choice for a short, medium and long distance

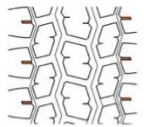
TECHNICAL CHARACTERISTICS:



Horizontal pattern provide tyre excellent drive and brake performance.



Open shoulders and tire heat dissipation design and shoulders pattern groove advantage.



Pattern block edge small groove effectively improve the wet resistance of the tire

ADAPTABLE POSITION:

 recommendation



Size	Ply	Load index/Speed	Depth (mm)
11R22.5	16	146/143L 148/145L	19

LM 305

All Position Short Distance Off Road Service

- The LM305, a cut chip deep lug drive is an exceptional off road tyre available from a 25mm tread depth in a 11 R22.5
- The addition of the reinforced rib shoulder blocks promote maximum strength and tyre durability

TECHNICAL CHARACTERISTICS:



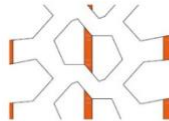
Horizontal and deep trench excavation pattern provide tyre excellent drive and brake performance.



Deepen the transverse shoulder wide open pattern groove design, to provide good self-cleaning.



Deepen the pattern to increase mileage.



The shoulder and decorative pattern between blocks design of the strong gluten, effective. Inhibition of pattern block root fissure.

ADAPTABLE POSITION:

 recommendation



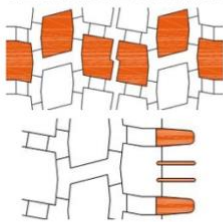
Size	Ply	Load index/Speed	Depth (mm)
11R22.5	16	148/145J 146/143J	25
12.00R24	18	158/155F	31.5

LM 326

Drive Position Long Distance On Highway Service

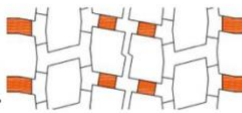
- The LM326 is a classic rib block tread design
- The combination of the design and Longmarch compound formula delivers another exceptional long haul tyre across a variety of applications

TECHNICAL CHARACTERISTICS:



Horizontal pattern provide tyre excellent drive and brake performance.

Open shoulder and tiny groove design, good tire heat dissipation.



The pattern between blocks design of strong gluten strength increase pattern block root, prevent the pattern block root tear.



ADAPTABLE POSITION:

 recommendation



Size	Ply	Load index/Speed	Depth (mm)
275/70R22.5	16	148/145M	20.5
315/80R22.5	20	156/150K 156/150M	22

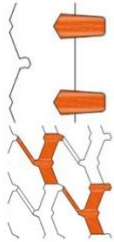
LM 519

All Position

On & Off Road Service

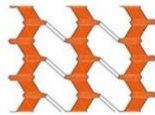
- The LM519 tread design promotes undeniable solid on & off road performance
- The compound is available in the latest cut chip tyre technology
- The product is now available in a wider variety of sizes including the 11 R22.5

TECHNICAL CHARACTERISTICS:



The shoulder grooves effectively reduce tyre heating.

“Y” pattern groove design to improve the self-cleaning properties of the tyre.



Three vertical line pattern main ditch make tires with good directional stability and high speed performance.



ADAPTABLE POSITION:

 recommendation



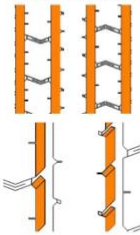
Size	Ply	Load index/Speed	Depth (mm)
7.00R16LT	14	118/114K	12.5
7.50R16LT	14	122/118L	14
8.25R16LT	16	128/124L	14
11R22.5	16	148/145L 146/143L	15.5
295/80R22.5	18	152/149L	16
315/80R22.5	20	156/150L	18

LM 666

*Special Deep Tread
All Position City Bus Use*

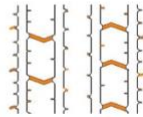
- The LM666 formula provides excellent wear resistance and wet performance
- The combination of the urban design and 22mm tread depth delivers great tyre longevity even through the most tough working conditions
- Now available in both the 11 R22.5 and 275/ 70 R22.5

TECHNICAL CHARACTERISTICS:



Four vertical pattern groove provide excellent recommend suite and low noise performance

Deepen the pattern to increase Tire mileage.



Decorative pattern on the horizontal small groove Provide good resistance to wet, decorative pattern groove edge of a Trough to prevent irregular wear.

ADAPTABLE POSITION:

 recommendation



Size	Ply	Load index/Speed	Depth (mm)
275/70R22.5	16	148/145M	22
11R22.5	16	148/145M	22

LM 115

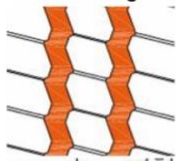
All Position

Local Steer & Trailer

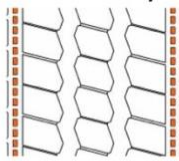
- Drive Distance: Short, mid and long distance
- The history of the LM115 pattern provides excellent wear resistance, low heat generation and high speed durability
- The choice of tread depth (mm) delivers low rolling resistance and provides excellent fuel efficiency

TECHNICAL CHARACTERISTICS:

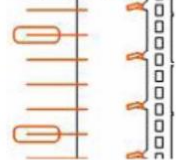
- Excellent wear resistance, low heat generation and high speed durability
- Low rolling resistance, provides excellent fuel efficiency



straight-forward broken line design
Provide high speed performance and anti-wet slip performance



Self-cleaning block design
Improve the self-cleaning of tire effectively



The grooves on shoulder
Helps the tires dissipate heat and reduce irregular wear on the shoulders



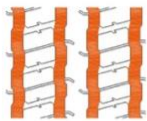
Size	Ply	Load index/Speed	Depth (mm)
11 R22.5	16	148/145M	15
295/80 R22.5	18	152/149L	16
315/80 R22.5	20	156/150L	16.5

LM 126

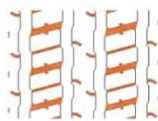
All Position On Road Service

- Drive Distance: Short and medium distance
- The combination of the new tread design and formula helps fight irregular wear and supplies better wet-skid resistance
- The choice of the 10mm delivers both low heat resistance, low rolling resistance and excellent fuel efficiency

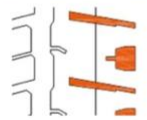
TECHNICAL CHARACTERISTICS:



Four forward line groove design to improve the high speed performance and good control performance.



The small groove pattern on the tire improved grasping performance and wet skid resistance capacity and wear more evenly.



The shoulders and the groove edge fine. A small groove is conducive to heat dissipation, Reduce the irregular wear.

ADAPTABLE POSITION:

 recommendation



Size	Ply	Load index/Speed	Depth (mm)
235/85R16	14	126/123L	10
ST235/85R16	14	129/125L	10

LM 128

*Wide Base Trailer / All Position
On & Off Road Service*

- The history of the "XYZ" pattern helps fight irregular off-road wear better than most straight rib designs
- The advantage of a single wider tyre replacing dual single tyres

TECHNICAL CHARACTERISTICS:



The 5 line shaped main pattern Trench provides excellent wet skid resistance.



Shoulder notches To reduce heat shoulder Irregular wear.



Crown curve design optimization to reduce tire irregular wear.

ADAPTABLE POSITION:

 recommendation



Size	Ply	Load index/Speed	Depth (mm)
385/65R22.5	20	160K(158L)	16
425/65R22.5	20	165K	17

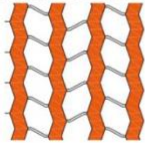
LM 135

All Position

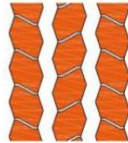
On & Off Road Service

- The combination of the tread design and compound formula delivers a good abrasion resistance, heat build-up and wet skid resistance
- The structure of 4 belt layers provides excellent high speed durability and comfort

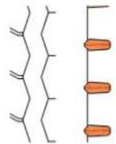
TECHNICAL CHARACTERISTICS::



The four line groove
Provides good speed
and wet skid
resistance.



Block the best angle
Arrangement, provide
excellent, traction,
braking performance.



Shoulder deep pattern
Trench effectively
reduce the tire heat.

ADAPTABLE POSITION:

 recommendation



Size	Ply	Load index/Speed	Depth (mm)
9.5R17.5	18	143/141J	12

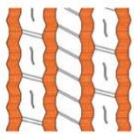
LM 166

All Position

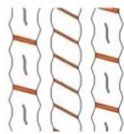
On Road Service

- The combination of the LM166 tread design and compound formula holds a solid history for good abrasion resistance and heat build-up
- The unique bead design provides outstanding durability for heavier work loads

TECHNICAL CHARACTERISTICS:



Four broken line groove
High speed performance
is good.



The pattern on the
transverse groove
For a good grip strength.



Shoulder groove and
a small knife slot
Reduce the tire heat.

ADAPTABLE POSITION:

 recommendation



Size	Ply	Load index/Speed	Depth (mm)
7.00R16LT	14	118/114L	10.5
7.50R16LT	14	122/118L	12.5
8.25R16LT	16	128/124L	12

LM 168

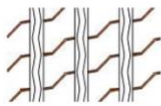
Super Single

Wide Base Trailer Position

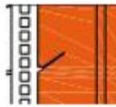
Highway Service

- The traditional choice of the straight rib pattern fights irregular road wear and delivers low rolling resistance for maximum fuel efficiency
- The advantage of a single wider tyre replacing dual single tyres
- The tyre's ability to balance more consistently has owned it's reputation in the market place

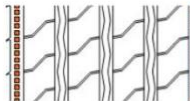
TECHNICAL CHARACTERISTICS:



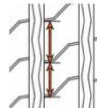
The winding narrow transverse grooves provide drainage, excellent performance and grip performance.



Increase the tire shoulder rigid shoulder design wide, high performance tire.



Increase the self-cleaning tread section block design effectively improve tire.



Design patterns from the renegade improving noise performance of tire.

ADAPTABLE POSITION:

 recommendation



Size	Ply	Load index/Speed	Depth (mm)
385/65R22.5	20	160K/158L	15

LM 701

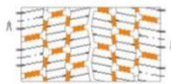
Drive / Trailer
On Snow/Ice Service

- The LM701 is the one of Longmarch's oldest traditional rib block pattern
- The product is available with the latest cut chip tyre technology providing good even wear throughout the tyre life
- The special compound provides great tread hardness through the colder seasons while delivering maximum wet skid resistance and grip

TECHNICAL CHARACTERISTICS:



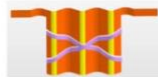
The design of the curved steel sheet on the crown provides excellent wetland grasping and snow traction performance.



The intersections are designed to strengthen the root of the pattern to prevent root cracks.



Directional pattern provides low rolling resistance to tires and reduces fuel consumption.



The new 3D steel plate design can effectively prevent the snow and ice road from skidding and provide the braking and control performance

ADAPTABLE POSITION:

 recommendation



Size	Ply	Load index/Speed	Depth (mm)
315/70R22.5	18	154/150J	20.5
11R22.5	16	148/145J	20.5

LONGMARCH

sales@emtint.com
(08) 9353 3535